

TRANSMITTAL OF MITSUBISHI HIGH SPEED DIESEL ENGINE DOCUMENT

ORDERED BY

CUSTOMER

	PART NAME	PART No.	FOR APPR.		FOR APPR.								ENGINE TYPE S6K-D65SAG
			N	D	N	D	N	D	N	D	N	D	
1	S6K-D65SAG SPEC.	SPC-S6K-346	P	A	P	B							A: First offer B: Addition of China Emission Regulation Label (Export Only Label)
2	S6K ENGINE ASSY	34300-02510	P	A									
3	S6K-D65SAG ENG ASSY	34300-02511			P	B							
4	ACCESSORIES (WITH ENGINE)		P	A	P	B							
5													
6													
7													
8													
9													
10													
11													
12													
13													
14													
15													
16													
17													
18													
19													E
20													
21													
22													D
23													
24													
25													C
26													
27													
28													B
29													
30													
31													A
32													
33													DATE
34													APPROVED
35													CHECKED BY
													CC
													ORDER

H. Komatsu
 T. Hirose
 Mar. 14. 2016
 ref. spec

 A. Izaka
 Jun. 30. 09
 ref. spec



SPECIFICATIONS

Used for 80kVA generator

MITSUBISHI HIGH SPEED DIESEL ENGINE
△ MODEL MITSUBISHI S6K-D65SAG

(For GENERATOR OEM, 1500rpm)

APPLICATION
FOR APPROVAL



PLEASE RETURN AFTER APPROVAL

P	サ技
P	産E
P	E保
P	小E作
P	MHIES-A
	PDF
1	控
1	計

APPROVED		REMARKS		
DATE · SIGNATURE				
DATE Jun. 30. 2009				
MITSUBISHI HEAVY INDUSTRIES, LTD.				
CHG	DATE	APPROVED	CHECKED	DRAWN
				T.SHIMIZU
△	Mar. 14. 2016	<i>H. Imano</i>	<i>H. Komatsu</i>	

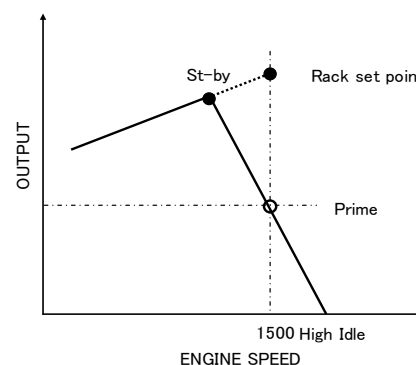
P:PDF配布

THE INFORMATION HEREON IS THE PROPERTY OF MITSUBISHI HEAVY INDUSTRIES, LTD.
WITHOUT WRITTEN PERMISSION, ANY COPYING, TRANSMITTAL TO OTHERS, AND ANY USE
EXCEPT THAT FOR WHICH IT IS LOANED, IS PROHIBITED.

1. Principal Particulars of Diesel Engine

General Specification

Standard	All items, unless otherwise specified, are in accordance with JIS and maker's standards
Model	Mitsubishi S6K
△	S6K-D65SAG
△	MHI No. 34300-02511 (1/2-CHG0, 2/2-CHG0)
Application	Generator
△ Regulations	National Standard of the People's Republic of China GB20891-2014 Export Only engine family; G3MVXLL0637KNZ (engine type; KNZ-S6K-PA1)
Type	4 cycle water-cooled, vertical overhead valve, cylinder in line, direct injection type
Number of cylinders	6
Bore × Stroke	102mm × 130mm
Piston displacement	6.373 liters
Compression ratio	17 : 1
Rotation	Anti-Clockwise rotation as viewed from flywheel side
Firing order	1-5-3-6-2-4
Engine weight(Dry)	Approx. 465kg
Dimensions(Length)	Approx. 1163mm
(Width)	Approx. 741mm
(Height)	Approx. 918mm
Inclination(Continuous)	Max.15°
(Temporary)	Max.15°
Fuel	ASTM diesel fuel oil No.2-D(JIS K2204 gas oil specification No.2 or 3)
Lubricating oil	API classification service CF,CF-4 or CH-4 class
Output(Without fan)	Spec.Rating Breaking in around 50hr
Rated speed	1500rpm St-by;70.5W Prime;64kW
Rack set point	70.5kW/1500rpm (With Fan St-by;69kW) (With Fan Prime,63kW)
Rating tolerance	±5% of nominal
Low Idle	1000±20rpm
High Idle	1583(0/-20)rpm
△ Rating conditions(Without fan)	ISO 15550 Total barometric pressure : 100kPa Air temperature : Relative humidity : 30%
Fuel consumption	245g/kW-h at Prime output and standard air conditions(Without fan)
△	
△ Oil consumption	Approx.0.1~0.3% of fuel consumption<Reference value>@ Full load, Rated speed



Fuel injection timing	20°BTDC
Mean effective pressure	0.80MPa{8.2kgf/cm ² } at Prime(Without fan)
Piston speed	6.5m/s at 1500rpm

Fuel system

Fuel injection pump	In-Line type
Fuel injection nozzle	Multi-Hole type
Governor	Mechanical centrifugal type
Fuel filter	Filtering paper type
Fuel pump	Yes(Engine attached)

Lubricating system

Lubricating system	Forced lubrication by gear pump
Lubricating oil filter	Filtering paper type, full flow
Oil pressure	0.2~0.4MPa{2~4kgf/cm ² } at duty run 0.1MPa{1kgf/cm ² } min. at low idling
Oil capacity	Approx. 20.5 liters (Oil pan high level 19 liters, Oil filter etc.) Approx. 1.5 liters, High ~ Low Approx. 5.2 liters)
Oil dipstick	Standard dipstick
Oil pressure switch	Yes
Oil pressure unit	Yes
Oil cooler	Plate type

Cooling system

Cooling system	Forced circulation of fresh water by centrifugal pump with thermostat
Engine water capacity	Approx. 9 liters
Cooling fan	580mm diameter, 7 blades, pusher
Water pump pulley	PCD 173mm
Pulley ratio	1.00 (Crankpulley : Water pump pulley = 173:173)
Fan spacer	60mm thickness
Water temp. switch	Yes
Thermo. Unit	Yes
Thermostat	Open at 71deg.C - full open at 85deg.C

Electrical system

Alternator	24V-35A
Voltage regulator	IC type (Built in alternator)
Regulator set voltage	28.5 ± 0.5V
Alternator pulley	PCD 80mm
Starting system	Electric starting
Starter motor	24V-5kW
Air heater	22V,95A
Engine shut off system	Electric solenoid (ETS)

Intake and Exhaust system

Intake manifold(cover)	Rear side way
Exhaust manifold	Upper side way
Induction Resistance	Max 1.96kPa{200mmH ₂ O}(Initial stage)
Exhaust Back Pressure	Max 6.7kPa{683mmH ₂ O}

<Remarks>

Engine color	Black(MHI standard color)
△ Flywheel	11-1/2 inch
Flywheel housing	SAE #3

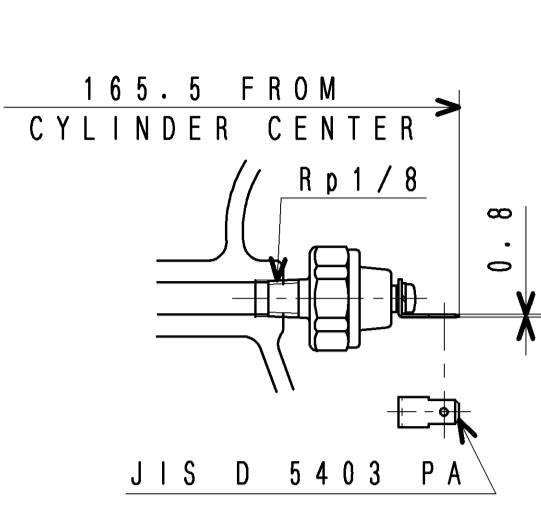
2. Engine attached items&Reference drawings

	Parts Name	Drawing No.	Q'ty	Remarks		
	WIRING DIAGRAM	34290-07021	-	Reference(only for)	A4	
1	SWITCH,OIL PRESSURE	MC840-219	1		A4	
2	SWITCH, THERMO	MC880-900	1		A4	
△	3					
△	4	UNIT,THERMOMETER	MD366-869	1	A4	
	5	STOP SOLENOID(ETS)	34287-01300	1	STOP SOLENOID KIT 34387-00030	A4
△	6	STARTER	32B66-12301	1	A4	
	7	AIR HEATER	36766-11502	1	A4	
	8	FILTER ASSY,FUEL	34362-00012	1	A4	
	9	ALTERNATOR	34368-04100	1	A4	
	10	OIL FILTER	34340-10022	1	A4	
	11	COOLING FAN	34348-00201	1	A4	
	12	L-JOINT	30625-35020	1	A4	

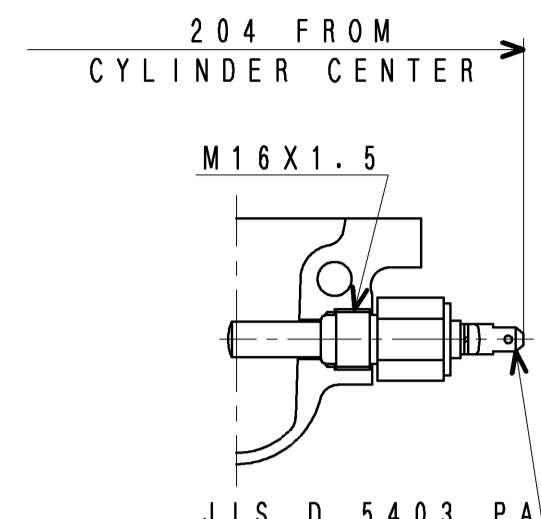
3. Accessories(Loose supply parts)

	Parts Name	Parts No.	Q'ty	Remarks	
1	TIMER CONTROL	32B90-02400	1		A4
2	CONNECTOR,3P	MM409-661	1		A4
3	CONNECTOR,4P	MM409-663	1		A4
4	CONNECTOR,2P	MH052-231	1		A4

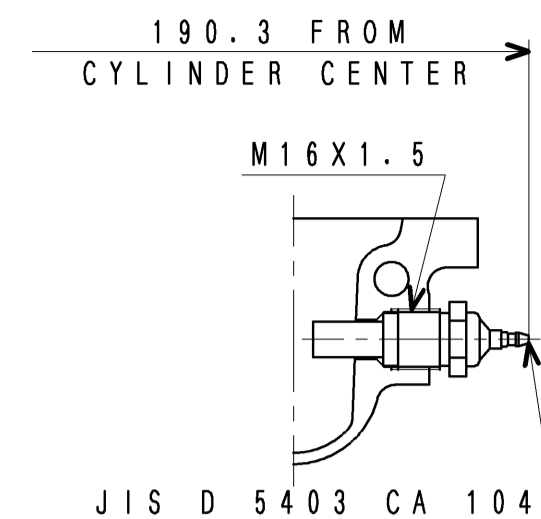
Note:Drawing No. Subject to alteration without notice



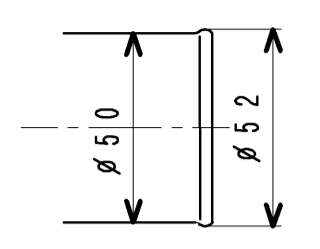
G-DETAIL



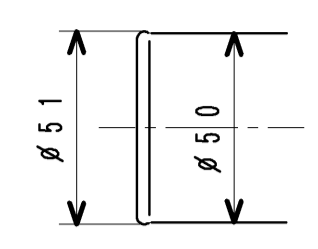
F-DETAIL



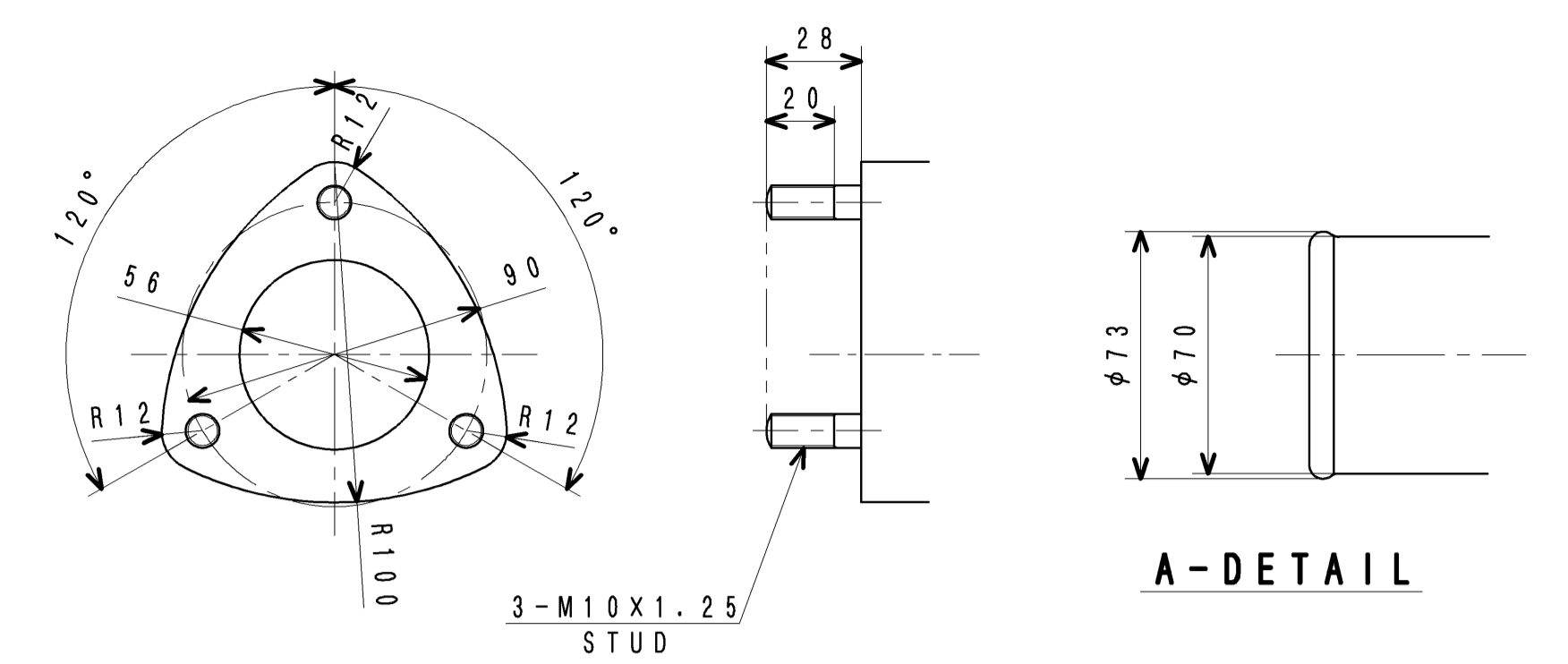
E-DETAIL



D-DETAIL

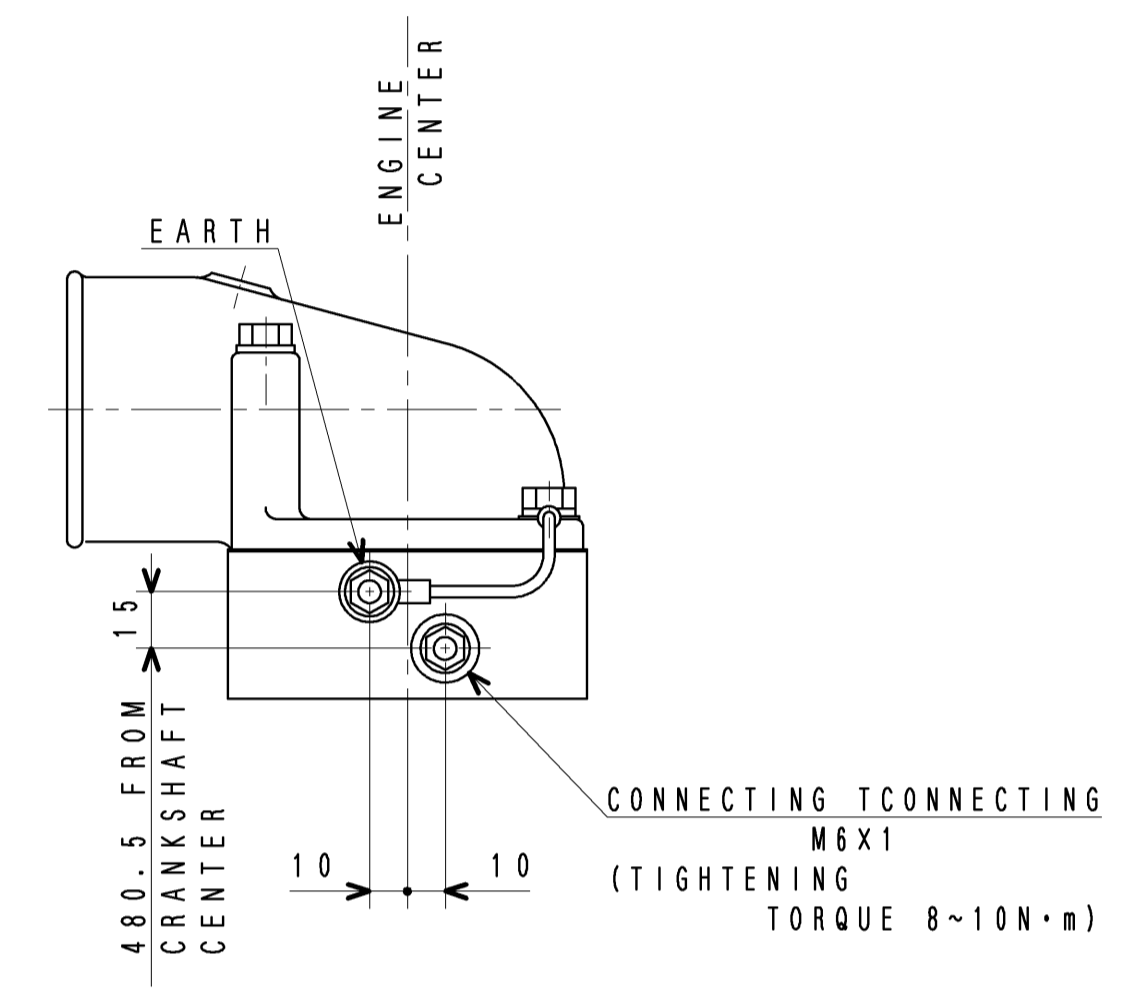


C-DETAIL



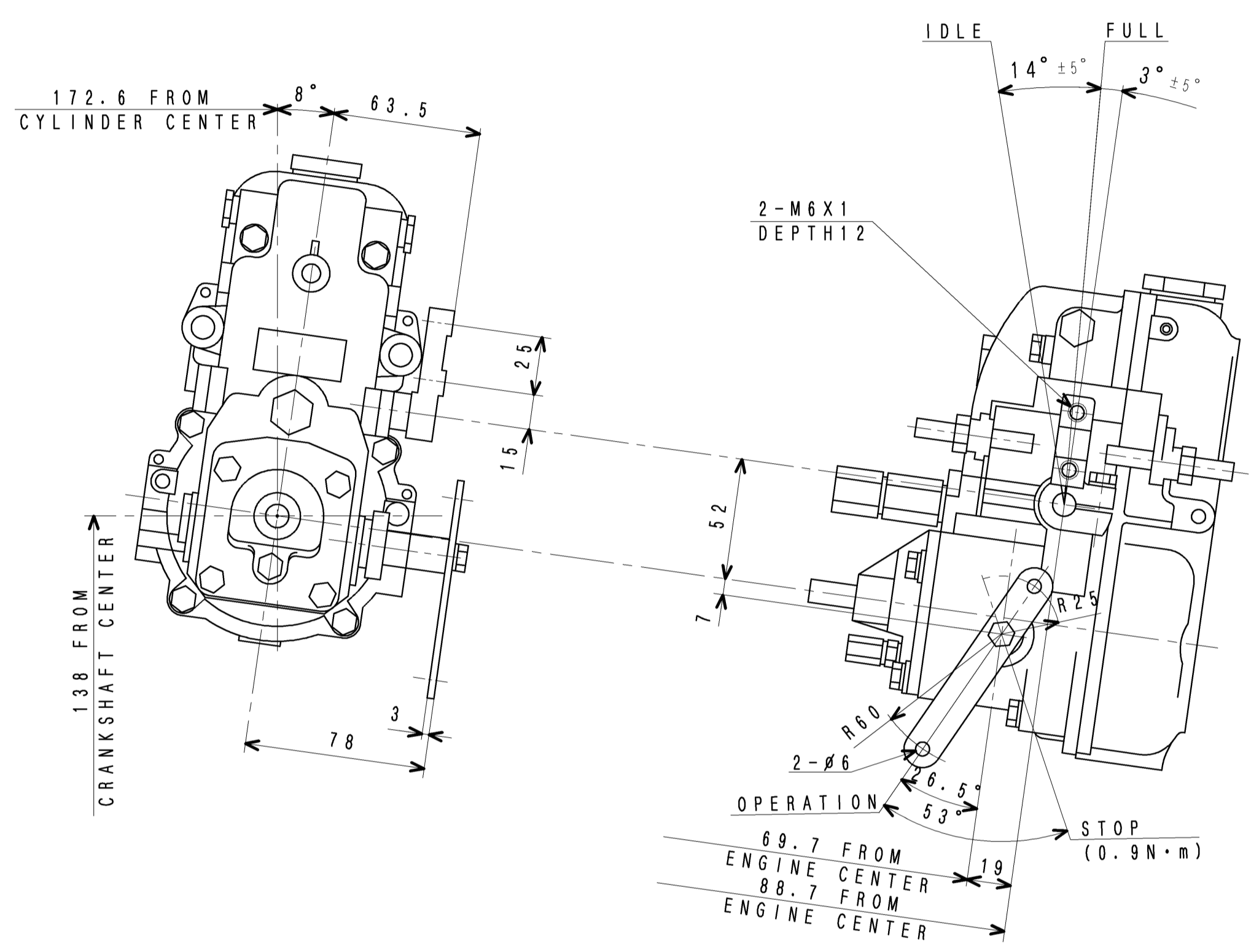
A-DETAIL

B-DETAIL

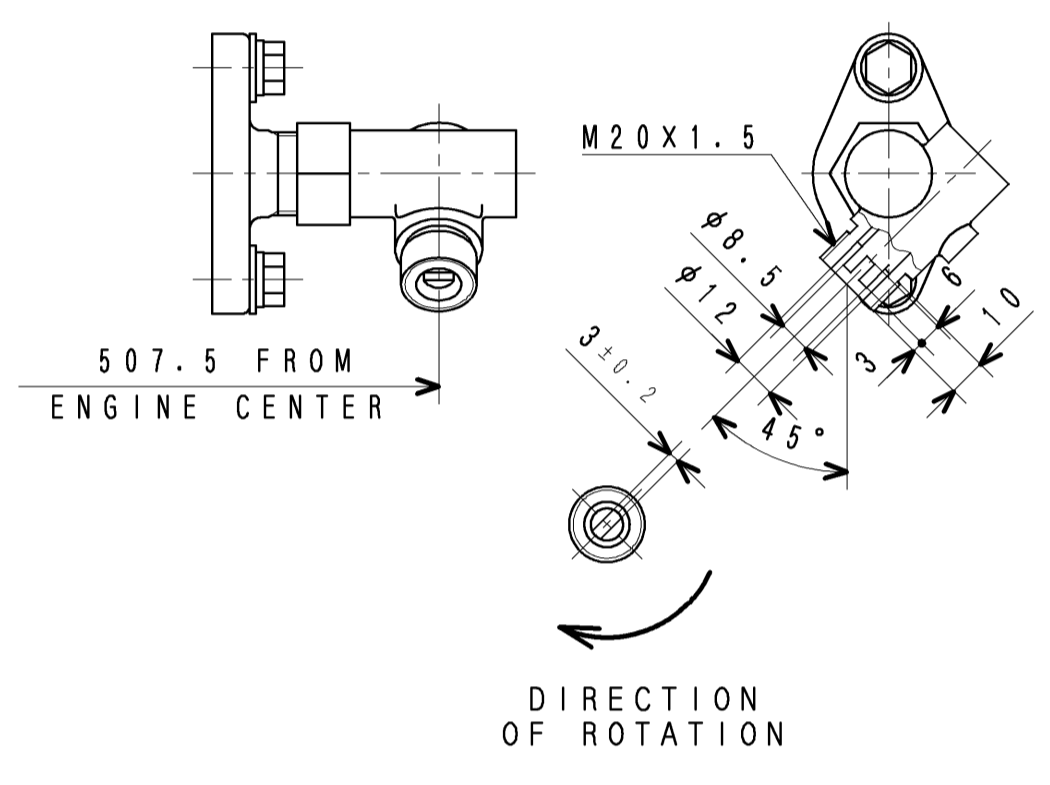


J-DETAIL

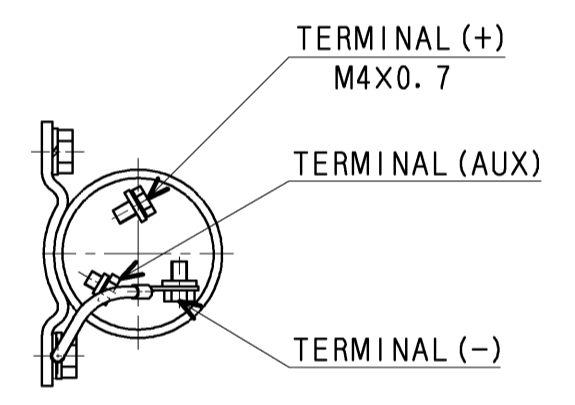
K-DETAIL



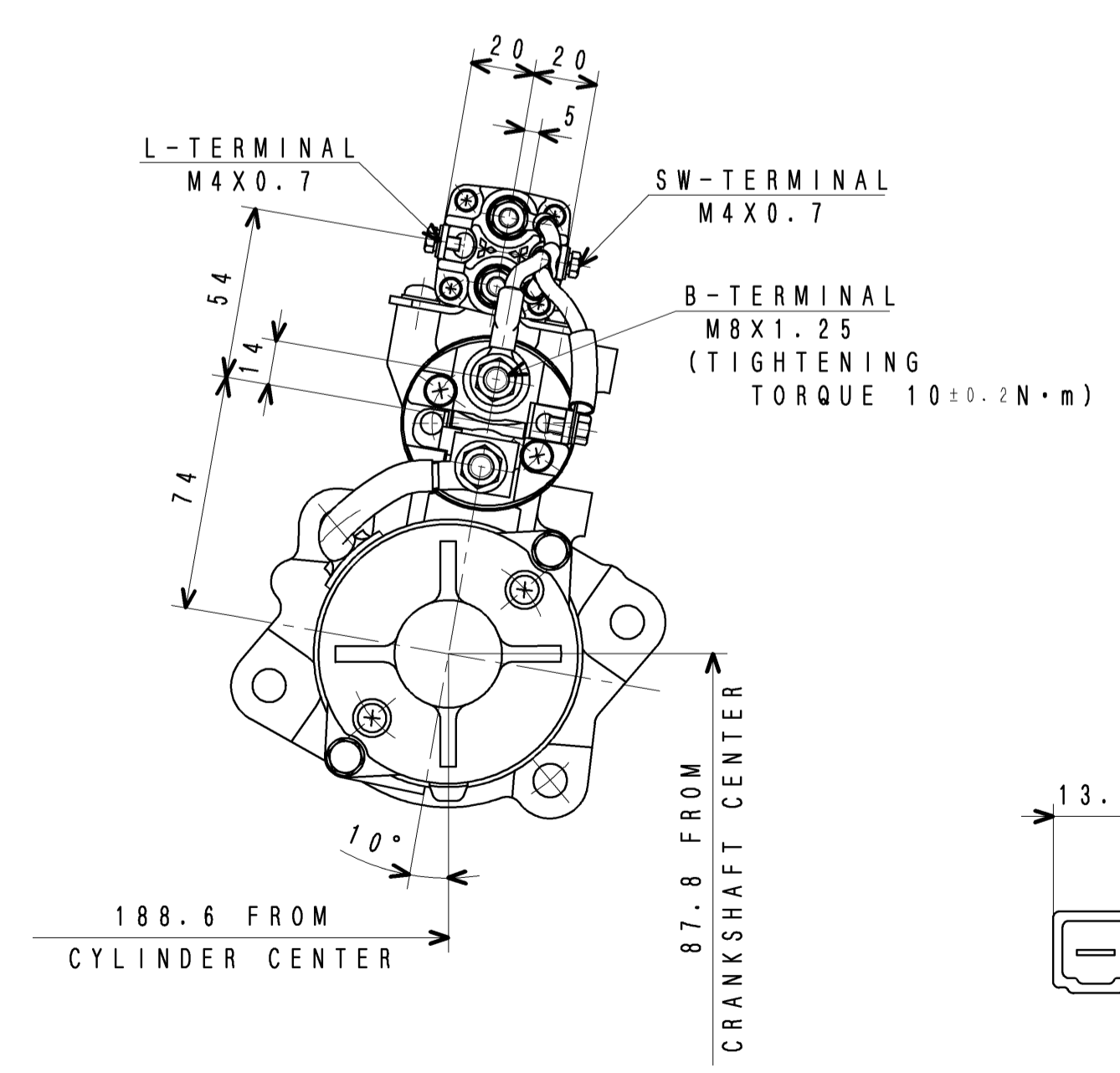
W-VIEW



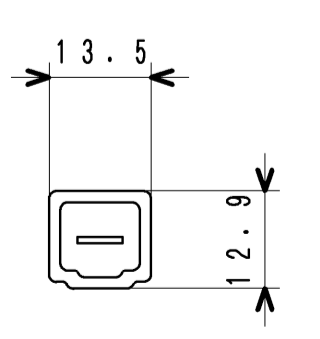
M-DETAIL



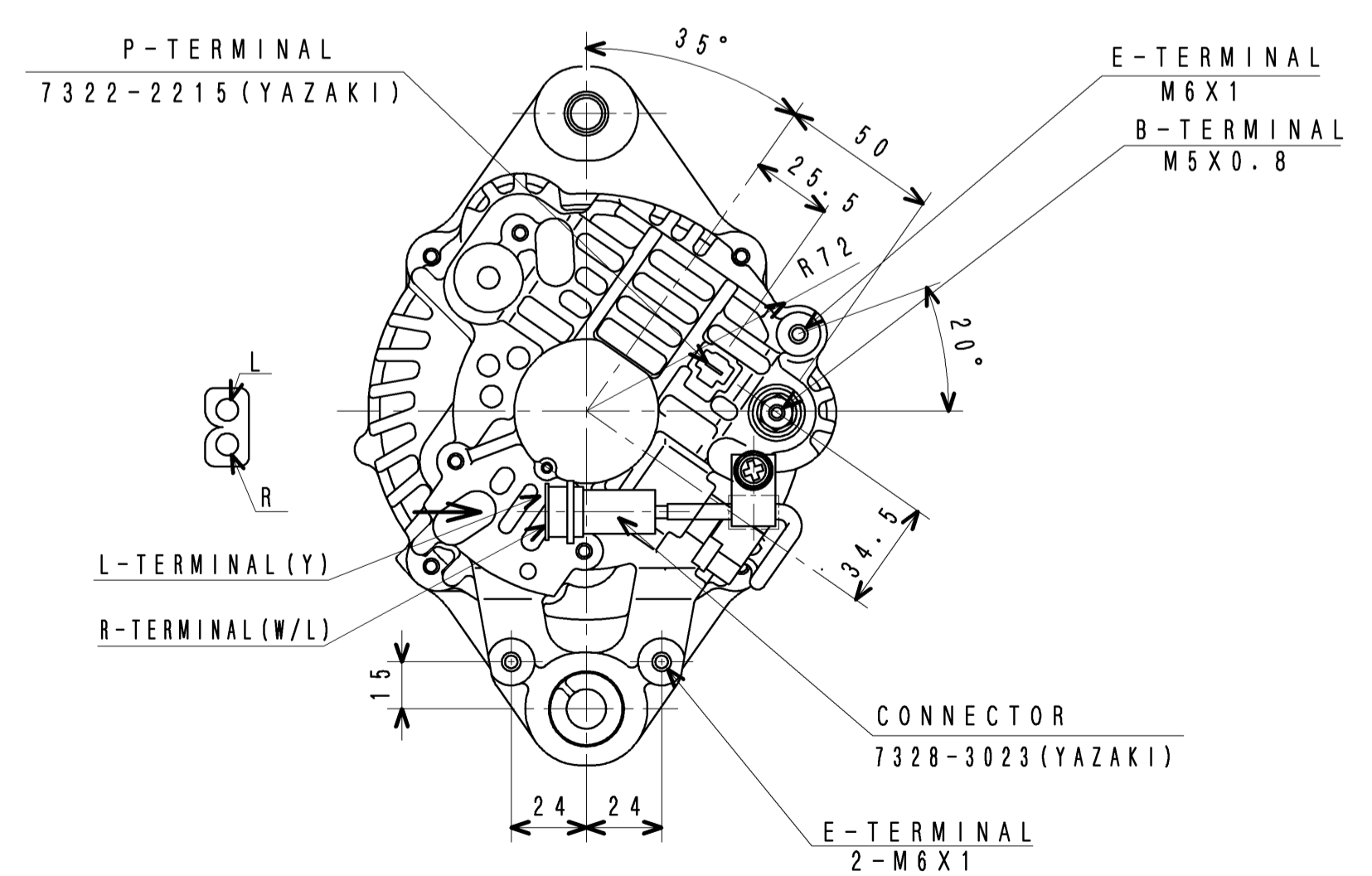
V-VIEW



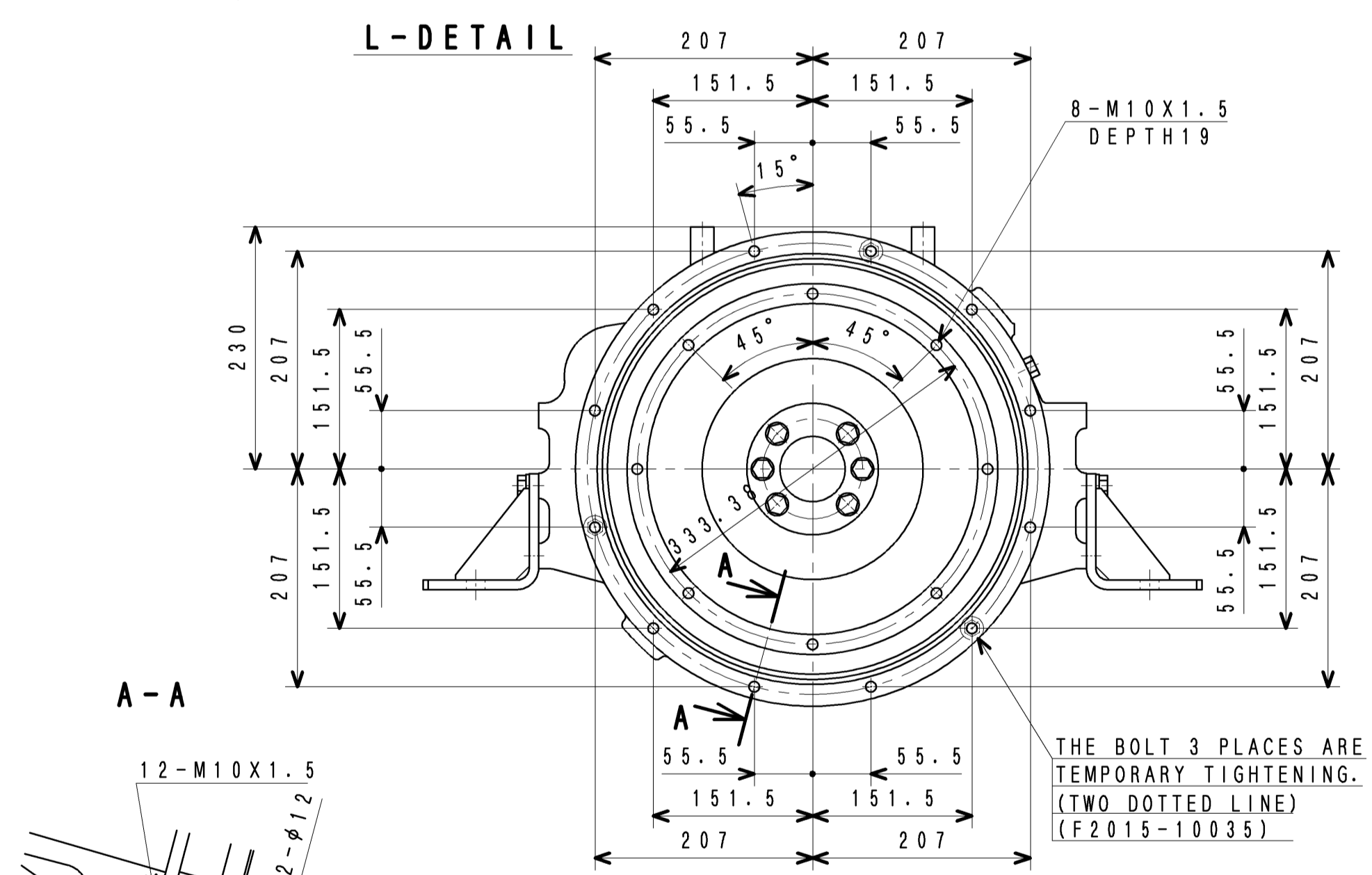
Y-VIEW



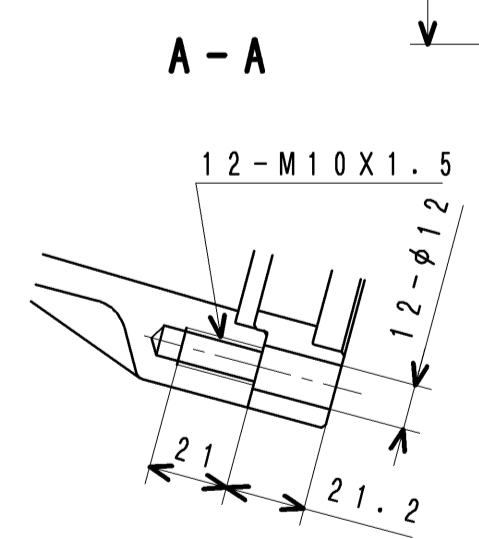
P-DETAIL (1:1)



X-VIEW



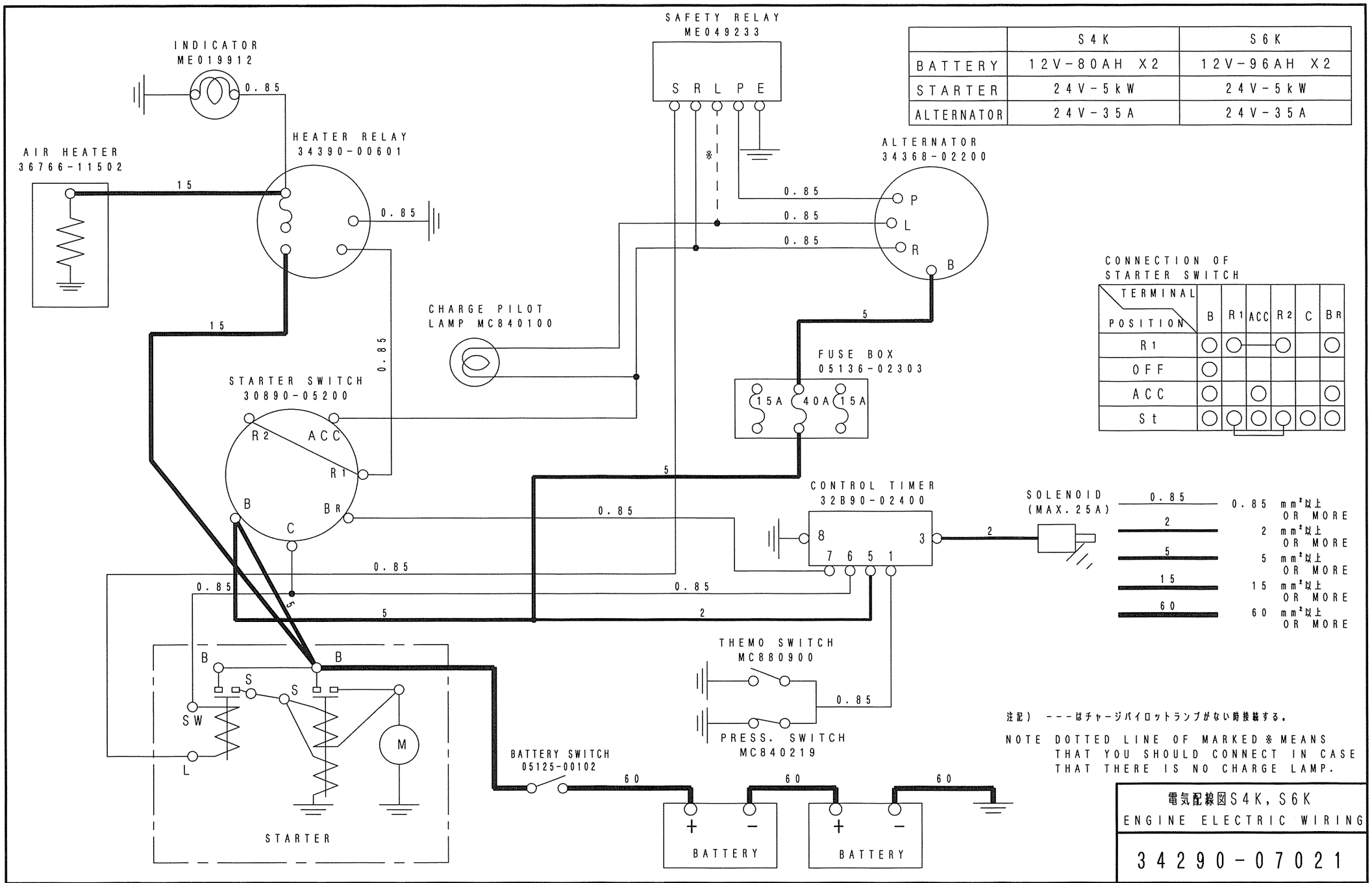
Z-VIEW (1:5)



A-A

FOR GENERATOR OEM
(CHINA: EXPORT ONLY)

3/4 ANGLE PROJECTION		S6K-D65SAG ENG ASSY	
(3430-A666)		三菱重工業株式会社 MITSUBISHI HEAVY INDUSTRIES, LTD.	
CHG	EO-NO	DATE	CHK
APPD	CHK	DATE	CHK
H. Komatsu		H. KOMATSU	
DRAWN (M.S.H.) DRN T. HIROSE C. IGARASHI		DRAWING NO. 34300-02511	
2016. 2. 29		2	



	S 4 K	S 6 K
BATTERY	12V-80AH X2	12V-96AH X2
STARTER	24V-5kW	24V-5kW
ALTERNATOR	24V-35A	24V-35A

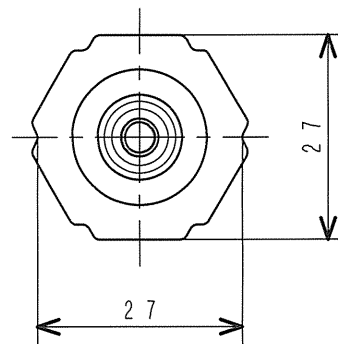
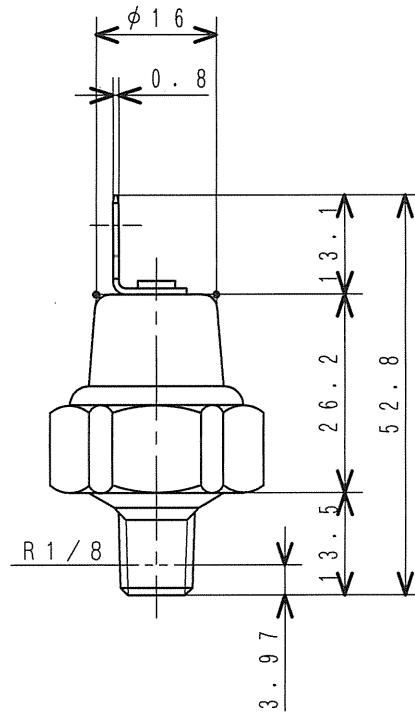
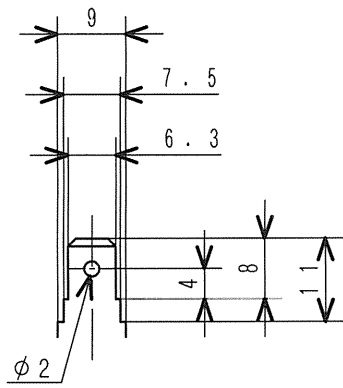
CONNECTION OF STARTER SWITCH

TERMINAL POSITION	B	R1	ACC	R2	C	BR
R1	○	○	○	○		○
OFF	○					
ACC	○		○			○
St	○	○	○	○	○	○

SOLENOID (MAX. 25A)	0.85	0.85	mm ² 以上 OR MORE
2	2	2	mm ² 以上 OR MORE
5	5	5	mm ² 以上 OR MORE
15	15	15	mm ² 以上 OR MORE
60	60	60	mm ² 以上 OR MORE

注記) ---はチャージパイロットランプがない時接続する。
 NOTE DOTTED LINE OF MARKED * MEANS THAT YOU SHOULD CONNECT IN CASE THAT THERE IS NO CHARGE LAMP.

電気配線図S4K, S6K
 ENGINE ELECTRIC WIRING
 34290-07021



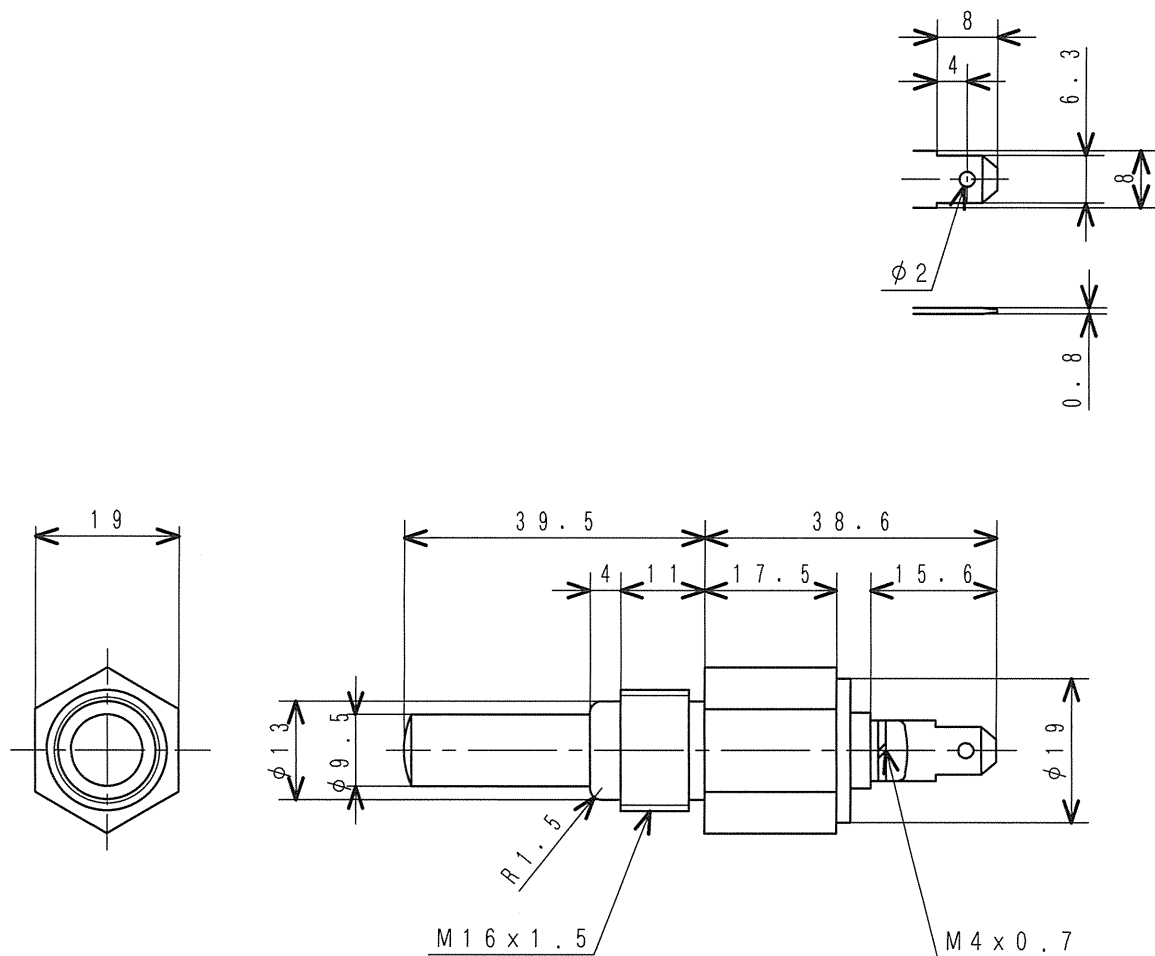
仕 様
SPECIFICATIONS

作 動 圧 力 OPERATING PRESS.	49 kPa {0.5 kgf/cm ² }
作 動 電 圧 OPERATING VOLT.	12V-5W 24V-5W

オイルプレッシャスイッチ
SWITCH, OIL PRESSURE

MC840-219

MHI CONFIDENTIAL



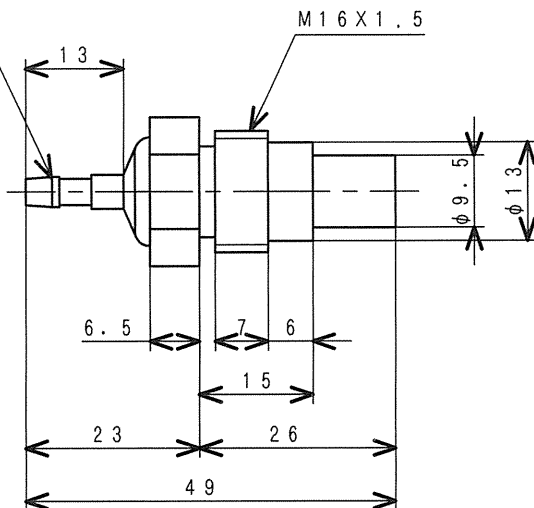
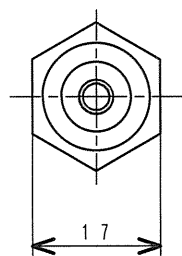
部品番号 PART No.	作動温度 OPERATING TEMP.		
MC880-900	温度下降時 DECREASE	$\leq 100^{\circ}\text{C} \pm 4^{\circ}\text{C}$	で接点開 OPEN
	温度上昇時 RISE	$\geq 100^{\circ}\text{C} \pm 2^{\circ}\text{C}$	で接点閉 CLOSE
MC880-901	温度下降時 DECREASE	$\leq 105^{\circ}\text{C} \pm 4^{\circ}\text{C}$	で接点開 OPEN
	温度上昇時 RISE	$\geq 105^{\circ}\text{C} \pm 2^{\circ}\text{C}$	で接点閉 CLOSE

定格負荷 RATED LOADED	1A以下 MAX.	0.5A以下 MAX.
定格電圧 RATED VOLT.	12V	24V

サーモスイッチ
SWITCH, THERMO

MC880-900

JIS D 5403 CA104

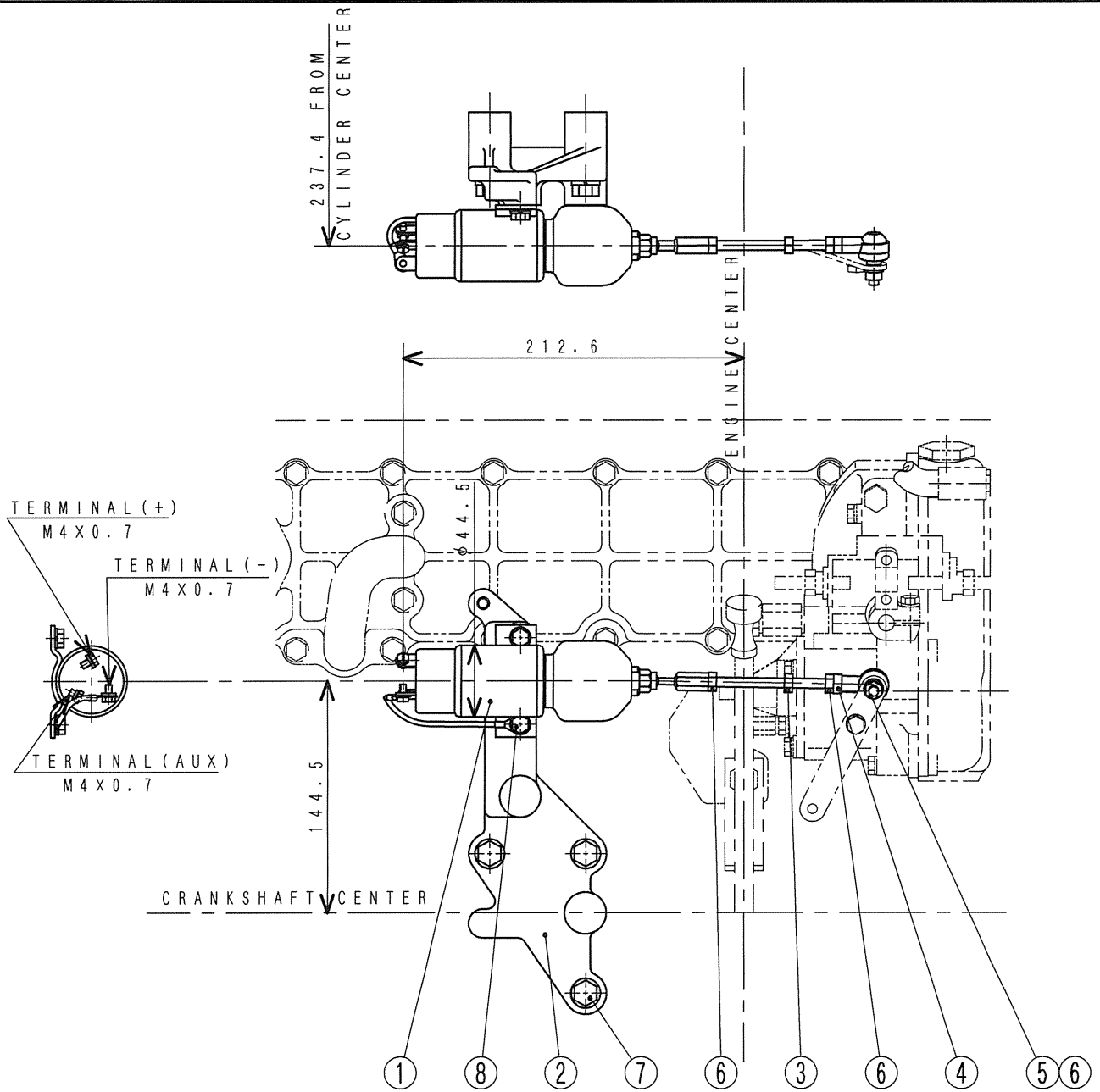


温度 (°C) TEMPERATURE	50	67	70	100	102	110	135
抵抗 (Ω) RESISTANCE	80	44.6	40.9	17.6	16.5	12.8	7

サーモメータユニット
UNIT, THERMOMETER

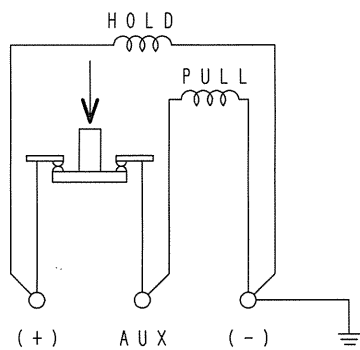
MD366-869

MHI CONFIDENTIAL



仕様 (20℃にて)
SPECIFICATIONS (AT 20℃)

定格電圧 RATED VOLT.	DC 24 V	
	プルインコイル PULL IN COIL	ホールディングコイル HOLD IN COIL
定格電流 RATED CURRENT	24.6 A	0.5 A
引張力 TENSILE FORCE	89 N {9 kg f}	180 N {18 kg f}



配線図
WIRING DIAGRAM

8	F1825-06012	BOLT W/ASSY	2
7	F2005-10055	BOLT W/ASSY	3
6	F2300-06000	NUT	3
5	F2515-06000	WASHER, SPRING	1
4	32563-06100	L-JOINT	1
3	34287-02603	ROD, SOLENOID	1
2	34387-10800	BRACKET, SOLENOID	1
1	34287-01300	SOLENOID	1
SYM	PART No.	PART NAME	QTY

ストップ ソレノイド キット

STOP SOLENOID KIT (S6K)

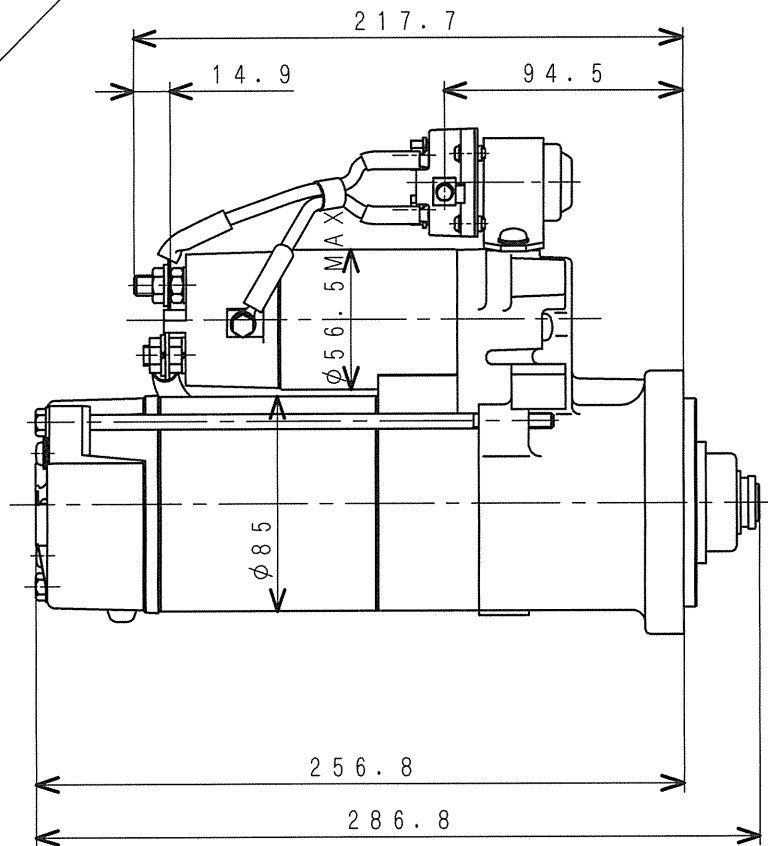
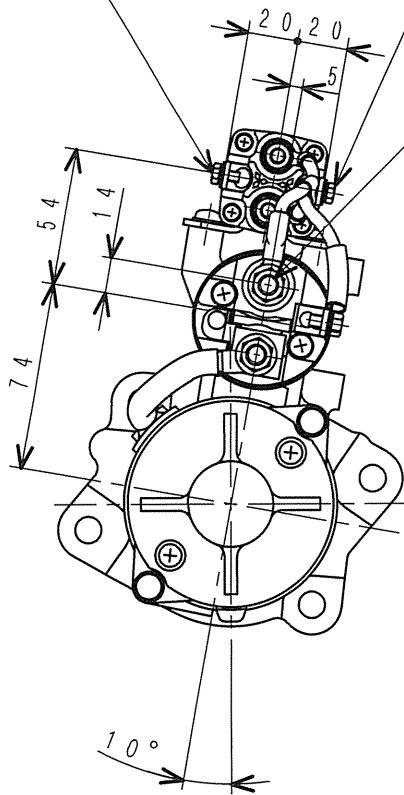
34387-00030

MHI CONFIDENTIAL

L-TERMINAL
M4X0.7
(FOR SAFETY RELAY)

SW-TERMINAL
M4X0.7

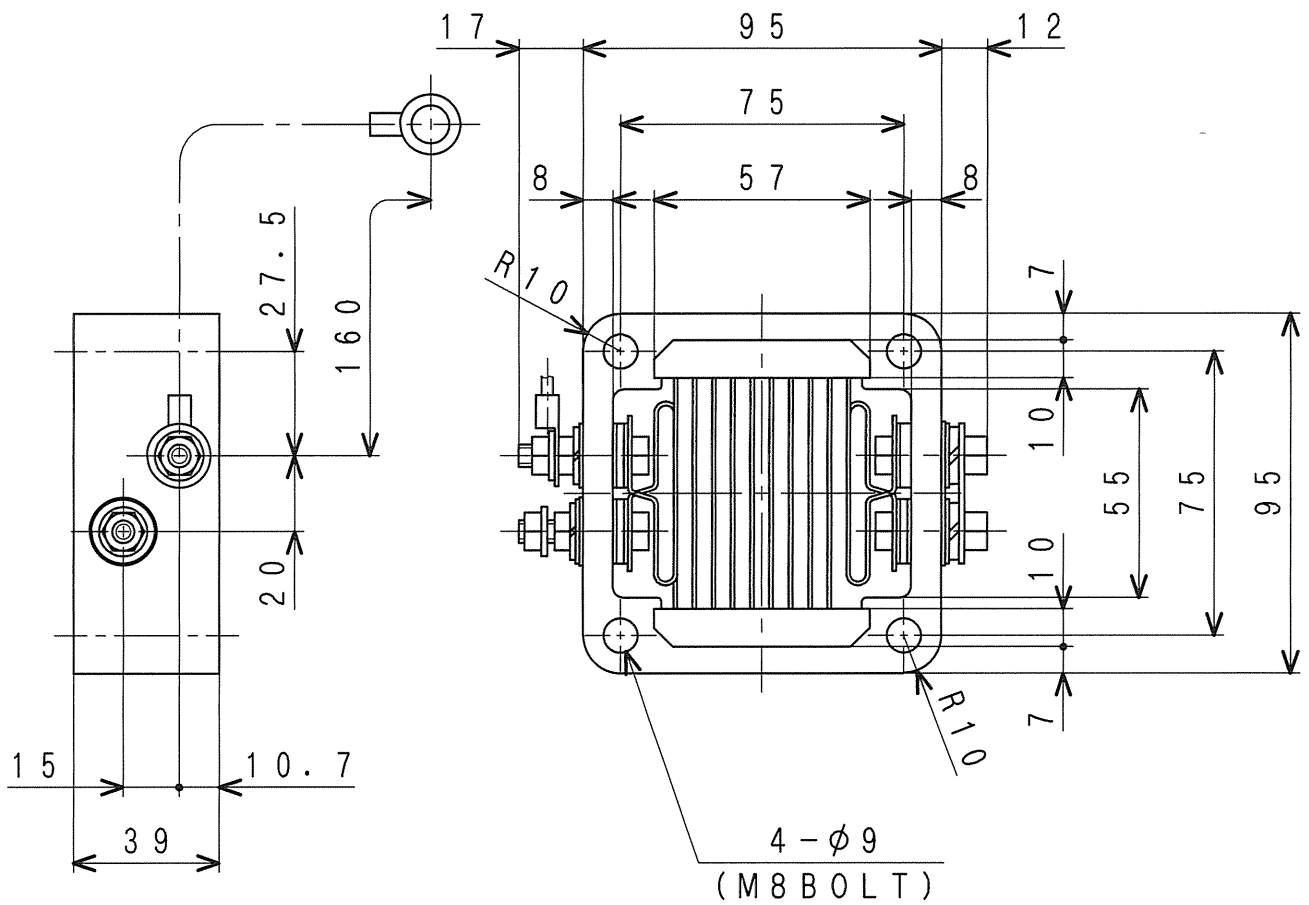
B-TERMINAL
M8X1.25
(TIGHTENING
TORQUE 10^{+2}_0 N·m)



MODEL	PART NO.	RATED OUTPUT OF STARTER	BATTERY (REFERENCE)
S4K, S6K	32B66-12301	24V-5kW	S4K: 80AH X2 $\triangle 1$ S6K: 96AH X2 $\triangle 1$

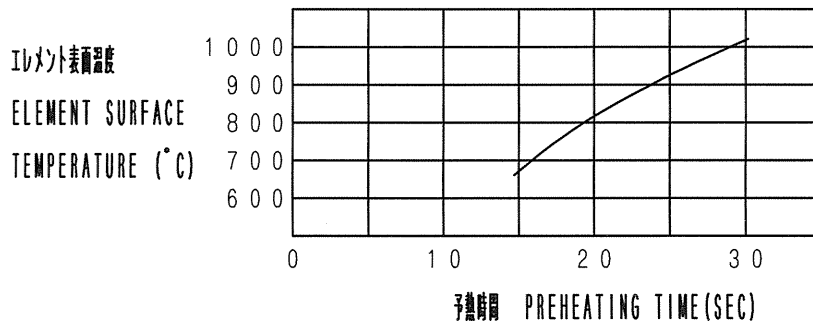
スタータ
STARTER (24V-5kW)

32B66-12301



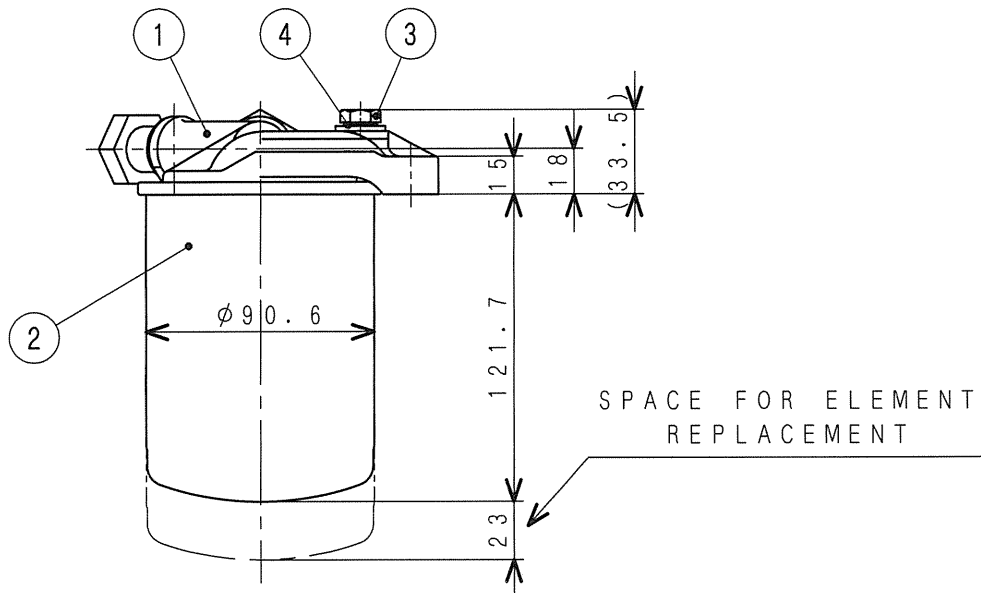
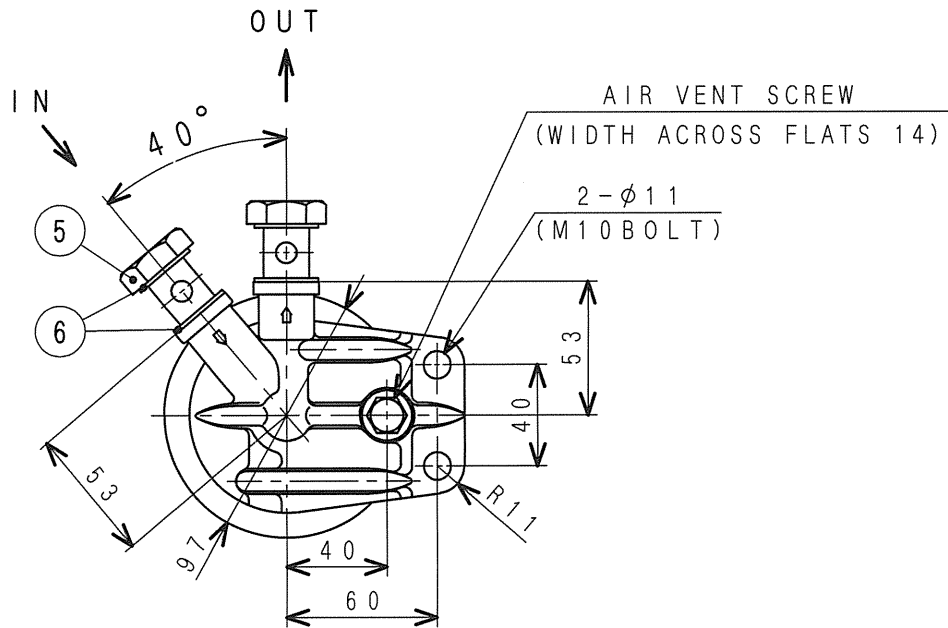
仕様
SPECIFICATIONS

容量 CAPACITY	2.1 kW
定格電圧 RATED CURRENT	95 A \pm 10% (AT 22 V)



エア ヒータ アッシー
AIR HEATER ASSY

36766-11502



2. FILTER TIGHTENING TORQUE: $13.7 \pm 2.0 \text{ N} \cdot \text{m}$ { $1.4 \pm 0.2 \text{ kgf} \cdot \text{m}$ }
 NOTE 1. THEN TIGHTEN $3/4 \sim 1$ TURN AFTER GASKET CONTACTS BASE.

2. フィルタ締付けトルク: $13.7 \pm 2.0 \text{ N} \cdot \text{m}$ { $1.4 \pm 0.2 \text{ kgf} \cdot \text{m}$ }
 注記 1. 取付けはシール面にガスケットが接触してから $3/4 \sim 1$ 回転締付けて下さい。

仕様
 SPECIFICATIONS

ろ過面積 FILTRATION AREA	3800 cm ²
定格流量 RATED FLOW	3 l/min
乾燥重量 WEIGHT	830 g

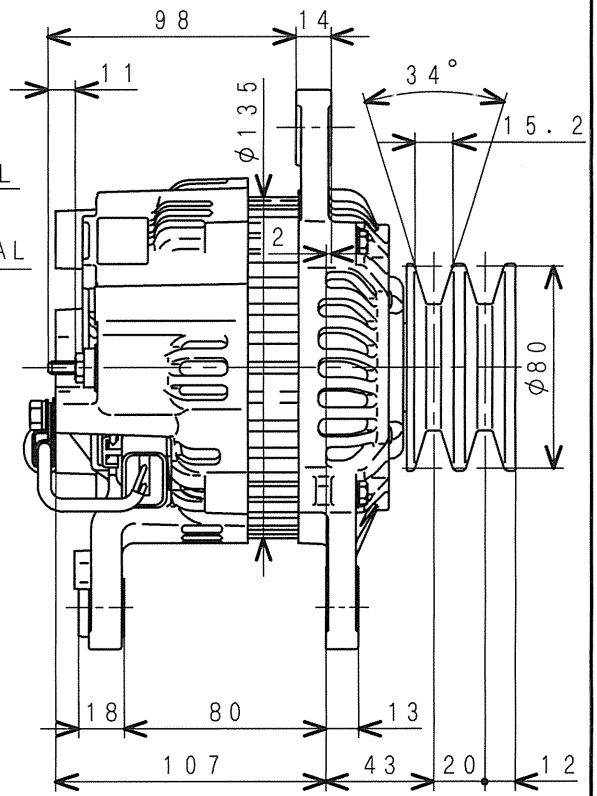
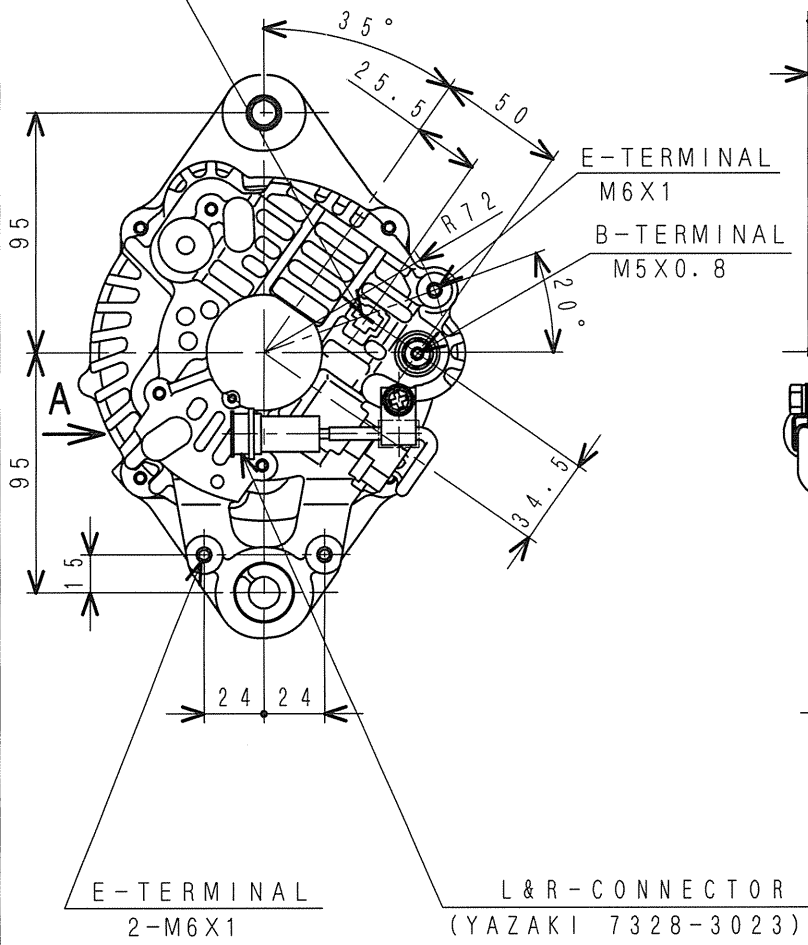
6	MH035-069	GASKET	4
5	MH037-087	BOLT, EYE	2
4	MH035-067	GASKET	1
3	ME016-894	PLUG, AIR	1
2	34362-00101	ELEMENT, FUEL	1
1	ME035-672	HEAD, FUEL FILTER	1
SYM	PART No.	PART NAME	QTY

ヒュエルフィルタアッシ

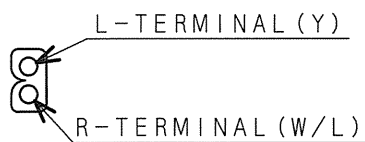
FILTER ASSY, FUEL

34362-00012

P-CONNECTOR
(YAZAKI 7322-2215)



A

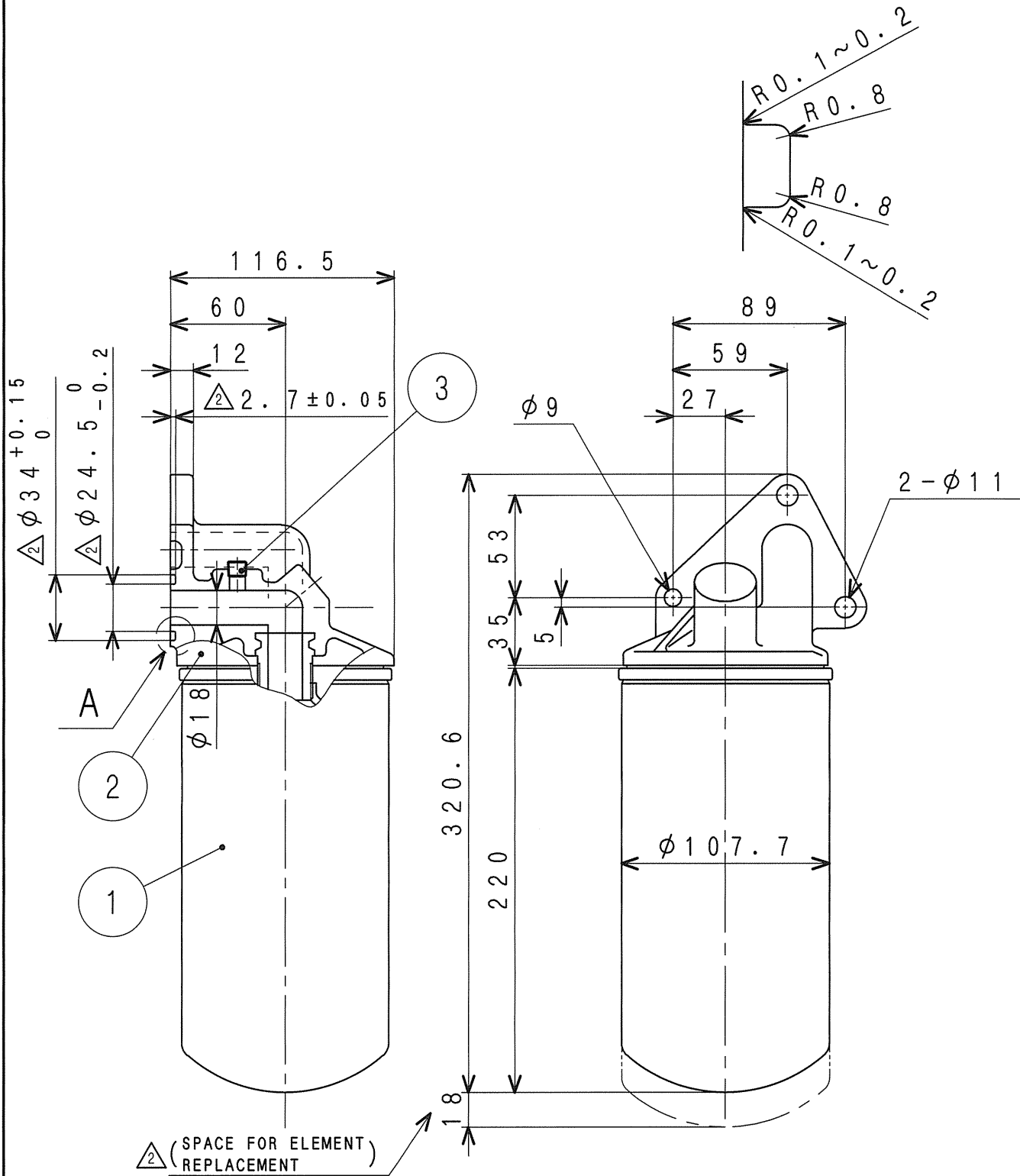


オルタネータ
ALTERNATOR (24V-35A)

34368-04100

MHI CONFIDENTIAL

△ DETAIL - A



仕様
SPECIFICATIONS

ろ過面積 FILTRATION AREA	0.5 m ²
-------------------------	--------------------

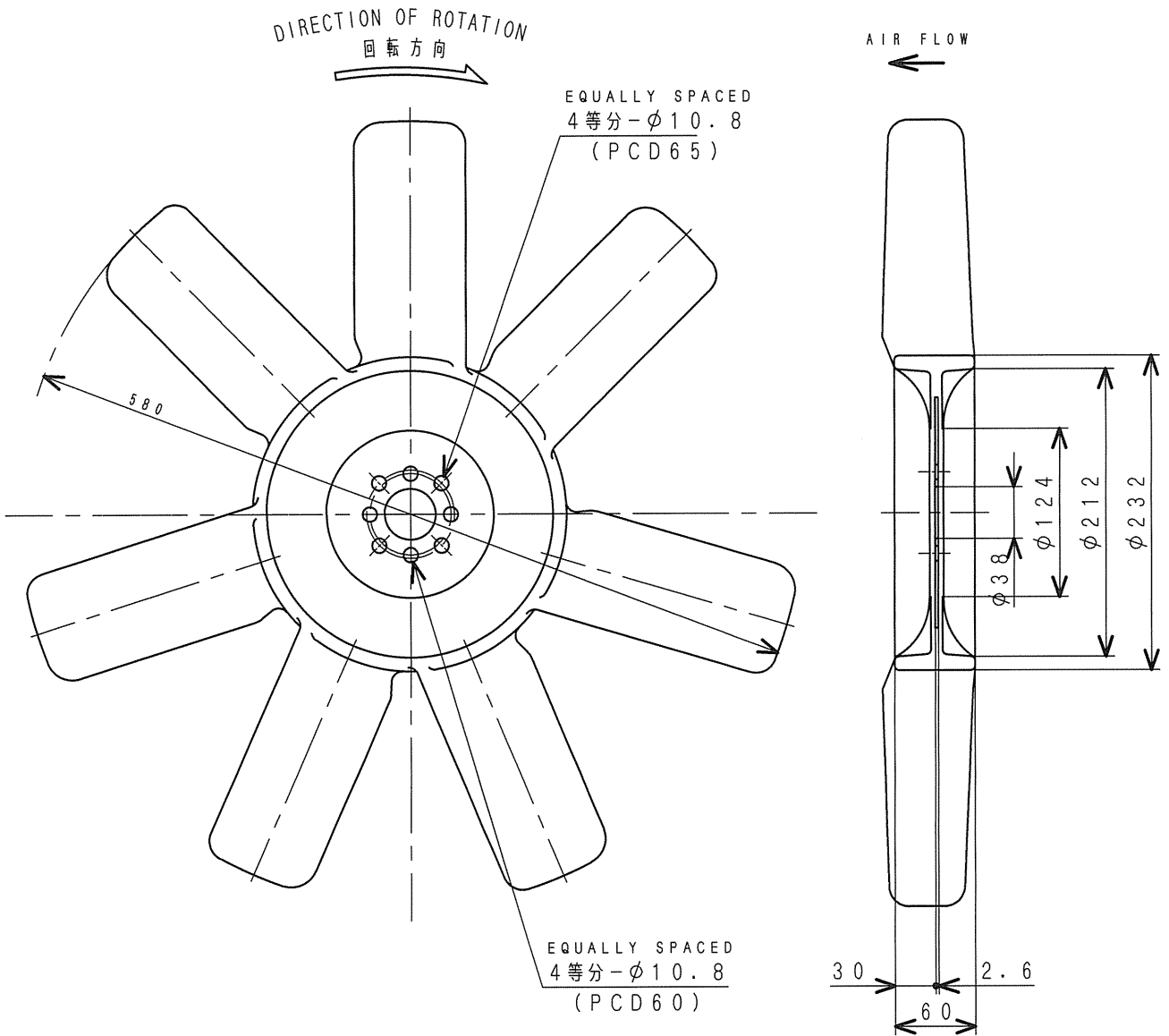
3	F5005-10001	PLUG, TAPER	1	
2	34340-10101	ELEMENT, OIL	1	
1	34340-00301	BRACKET	1	
△	SYM	PART No.	PART NAME	QTY

MATERIAL: ADC他
WEIGHT: 1.71 kg

オイルフィルタアッシ

OIL FILTER ASSY

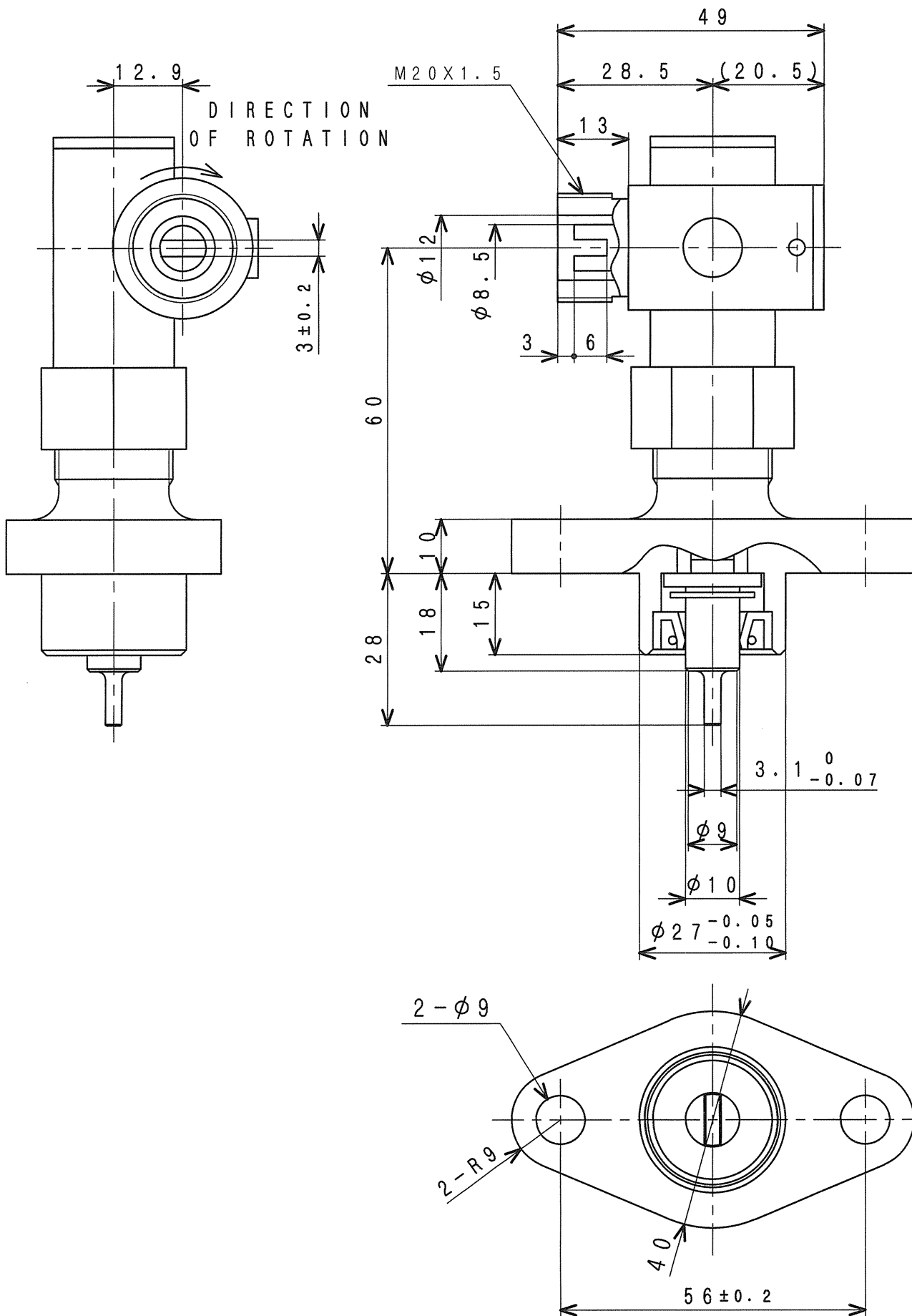
34340-10022△



クーリング ファン (プッシャー)
FAN, COOLING (7P-580)

34348-00201

MHI CONFIDENTIAL



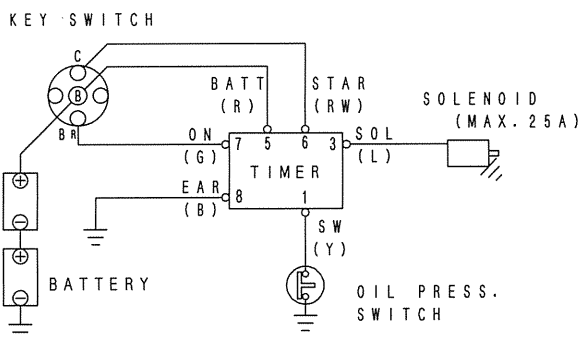
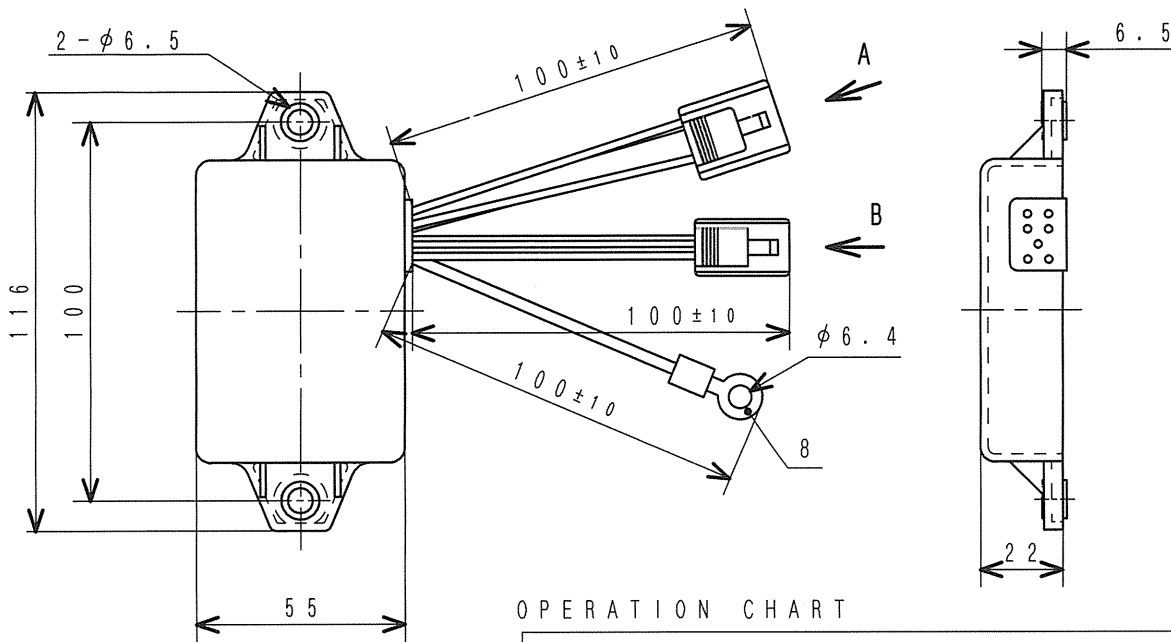
駆動軸と被駆動軸の回転比 1 : 1

ROTATION RATIO OF DRIVE & DRIVEN SHAFT IS 1 : 1

L-ジョイント
L-JOINT

30625-35020

MHI CONFIDENTIAL



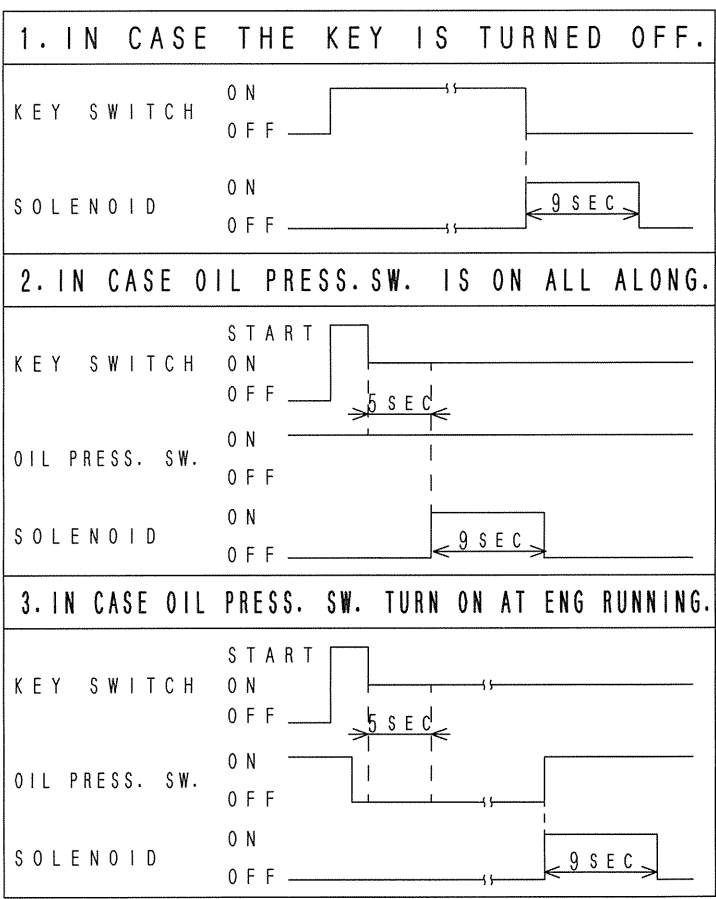
配線図
WIRING DIAGRAM

連続してキーON/OFF操作を繰り返さないこと。
NO CONTINUOUS KEY ON/OFF OPERATION PERMITTED.

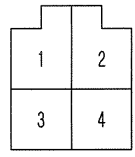
部品番号 PART No.	電源電圧(標準) VOLTAGE	許容ソレノイド電流 SOL. MAX. CURRENT	使用温度範囲 AMBIENT TEMP.
32B90-02400	24 V	25 A	-30~+80°C (-22~+176°F)

符号 SYM	線色 COLOUR	接続先 CONNECT FAR SIDE
1	YELLOW	油圧スイッチ OIL PRESS. SWITCH
2		(未使用) UNUSED
3	BLUE	ソレノイド(+) SOLENOID
4	BLUE	ソレノイド(-) SOLENOID
5	RED	バッテリー(+) BATTERY
6	RED WHITE	キースイッチ START KEY SWITCH
7	GREEN	キースイッチ ON KEY SWITCH
8	BLACK	アース EARTH

OPERATION CHART

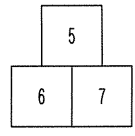


A-VIEW



4 POLES FEMALE
CONNECTOR
7323-2446 (YAZAKI)
TO MATE WITH
MM409-663 (MHI)
7122-2446 (YAZAKI)

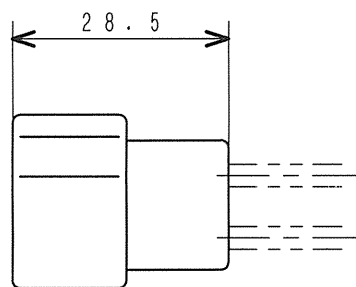
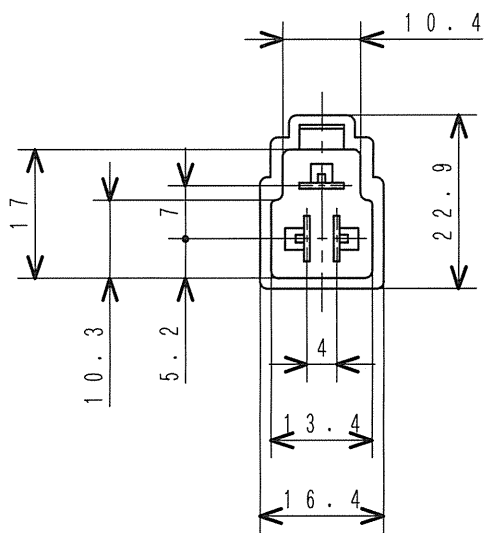
B-VIEW



3 POLES FEMALE
CONNECTOR
7323-2237 (YAZAKI)
TO MATE WITH
MM409-661 (MHI)
7322-2237 (YAZAKI)

コントロール タイマ (エマージェンシ リレー)
TIMER, CONTROL (RELAY, EMERGENCY)

32B90-02400

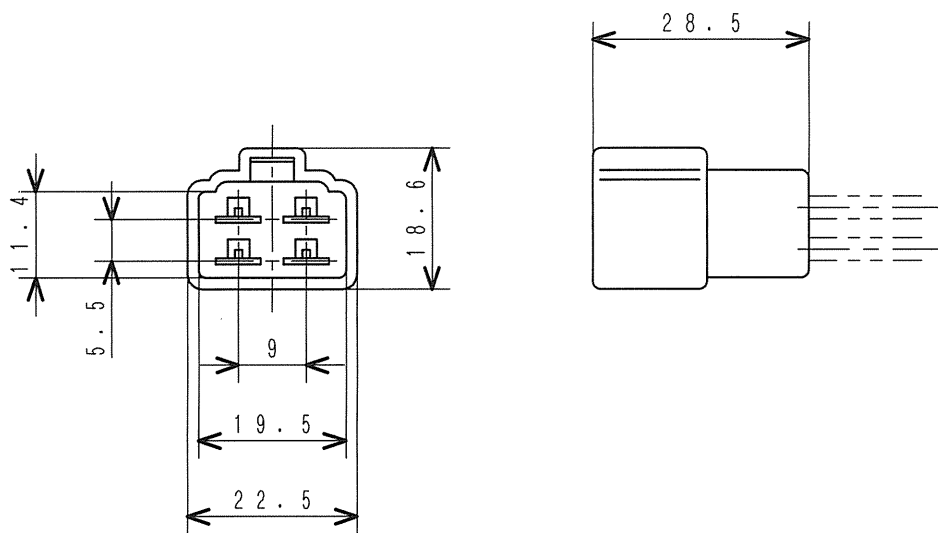


注 記 コントロールタイマ用 (YAZAKI 7322-2237)
 NOTE FOR CONTROL TIMER

コネクタ
 CONNECTOR (3 POLES)

MM409-661

MHI CONFIDENTIAL



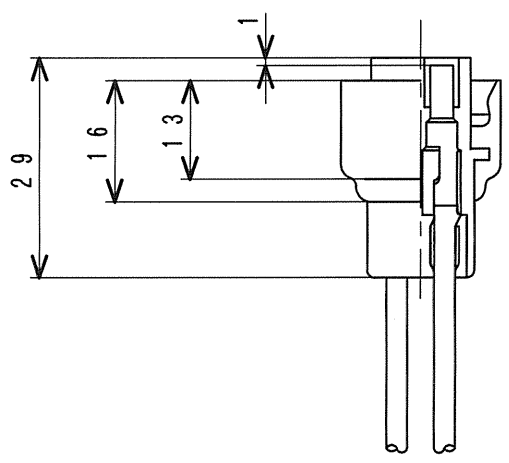
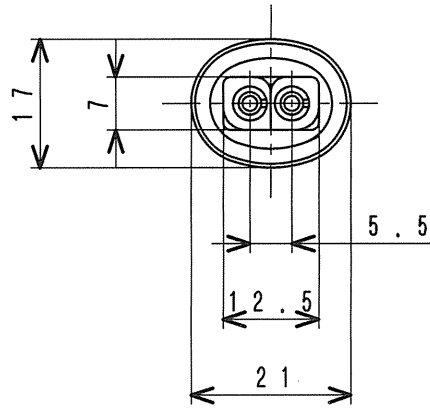
注 記 コントロールタイマ用 (YAZAKI 7122-2446)

NOTE FOR CONTROL TIMER

コネクタ
CONNECTOR (4 POLES)

MM409-663

MHI CONFIDENTIAL



注 記 タ*イナモ L, R端子用 (SK ENG ALTERNATOR)
 油水分離付燃料フィルタ用

NOTE FOR L AND R TERMINALS OF ALTERNATOR (SK)
 FOR FUEL FILTER WITH WATER SEPARATOR

コネクタ
 CONNECTOR (2 POLES)

MH052-231